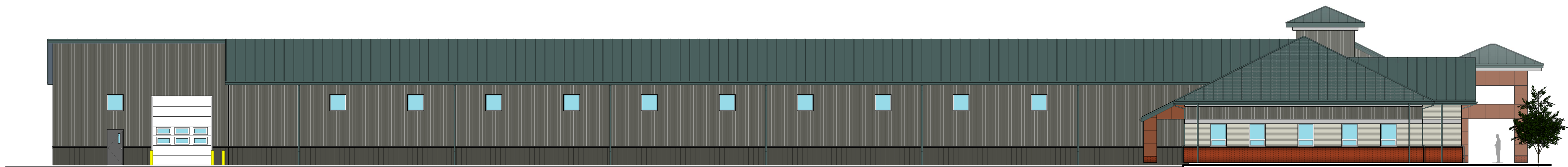




B1 WEST ELEVATION
1/8" = 1'-0"



D1 NORTH ELEVATION
1/8" = 1'-0"



F1 EAST ELEVATION
1/8" = 1'-0"



H1 SOUTH ELEVATION
1/8" = 1'-0"

ARCHITECT: **CAOLO & BIENIEK ASSOCIATES, INC.**
ARCHITECTURE, PLANNING, INTERIOR DESIGN
405 State Street
Chatham, Massachusetts
www.caolobieniek.com

CONSULTANTS:

OWNER: **SOUTH HADLEY
ELECTRIC LIGHT
DEPARTMENT**
85 MAIN STREET,
SOUTH HADLEY, MA

PROJECT: **NEW SHELD
HEADQUARTERS
FACILITY**
WILLIMANSETT STREET,
SOUTH HADLEY, MA

DATE	NO.	DESCRIPTION

SHEET TITLE:
**PRELIMINARY
ELEVATIONS**

NOTICE:
THIS DRAWING IS THE PROPERTY OF CAOLO & BIENIEK ASSOCIATES, INC. THE REUSE OR REPRODUCTION OF THIS DRAWING FOR ANY PURPOSE WHATSOEVER WITHOUT AN EXPRESSLY WRITTEN AGREEMENT BETWEEN CAOLO & BIENIEK ASSOCIATES, INC. AND THE USER IS STRICTLY PROHIBITED. RIGHTS TO USE THE INFORMATION ON THIS SHEET ARE NOT TRANSFERRED WITH PAYMENT HAS BEEN RECEIVED FOR SERVICES RENDERED. ANY RIGHTS SO GRANTED ARE NON-TRANSFERABLE TO OTHER PARTIES WITHOUT THE PRIOR EXPRESSED WRITTEN CONSENT OF CAOLO & BIENIEK ASSOCIATES, INC.

STAMPS:
© 2025 CAOLO & BIENIEK ASSOCIATES, INC.
PROJECT NO: 202439

ISSUE DATE: MAR. 27, 2025 SCALE: AS INDICATED
PROJECT MANAGER: JMac PRODUCTION LEADER: NM
PROJECT ARCHITECT: JMac PEER REVIEWER: TKH

A2.A