

*Electric Light Department
Town of South Hadley*

85 Main Street
South Hadley, MA 01075-2797

Telephone 413-536-1050
Fax 413-536-0741

**NOTICE UNDER MASSACHUSETTS GENERAL LAWS
CHAPTER 30A, SECTION 20**

BOARD OF COMMISSIONERS' MEETING

A meeting of the Board of Commissioners of the Town of South Hadley Electric Light Department will be held at **6:00 P.M. on Thursday, August 27, 2015**, in the Selectboard Meeting Room at 116 Main Street, South Hadley, Massachusetts.

AT THE ORDER OF ANNE S. AWAD,
CHAIR OF THE BOARD

Anne S. Awad

Anne S. Awad, Chair

A.S.A.

MEETING AGENDA

1. Public Comment
2. Minutes – May 28, 2015
3. Minutes – June 24, 2015
4. Manager's Report
5. Discussion on public review of facility needs

TOWN OF SOUTH HADLEY, MASSACHUSETTS

ELECTRIC LIGHT DEPARTMENT



MANAGEMENT REPORT

JUNE 2015

**TOWN OF SOUTH HADLEY, MASSACHUSETTS
ELECTRIC LIGHT DEPARTMENT**

INDEX

	<u>Page</u>
Financial Statement Overview	1
Financial Statements	
Statement of Net Position	2
Year-to-Date Statement of Revenue and Expense	3
Year-to-Date Statement of Cash Flows	4
Year-to-Date Schedule of Revenues, Cost of Power, and Kilowatt Hours	5
Year-to-Date Percent of Revenue Analysis	6
Month-to-Date Statement of Revenue and Expense	7
Month-to-Date Statement of Cash Flows	8
Month-to-Date Schedule of Revenues, Cost of Power, and Kilowatt Hours	9
Month-to-Date Percent of Revenue Analysis	10
Graphs	
2015 / 2014 Electric Revenues by Rate Class	11
2015 / 2014 kWh Sales by Rate Class	12
Monthly Electric Revenues	13
Monthly kWh Sales	14
Average Price per kWh Sold	15
Average Cost per kWh Purchased	16
2015 Monthly Operations	17
2014 Monthly Operations	18

**TOWN OF SOUTH HADLEY MASSACHUSETTS
ELECTRIC LIGHT DEPARTMENT**

FINANCIAL STATEMENT OVERVIEW

The 2015 year-to-date revenues from sale of electricity decreased by about \$481,000 compared with the same period in 2014. Actual kWh sold decreased by about 548,000 on a year-to-date basis. The average \$/kWh revenue decreased by \$.007234 in 2015. This revenue decrease, however, was offset by a decrease in cost of power of about \$589,000. The average \$/kWh cost decreased by \$.012168 in 2015. The 2015 net revenue after cost of electricity purchased showed an increase of about \$198,000 from 2014, or about 2.48% of 2014 revenues.

Distribution expenses increased by about \$58,000 compared to 2014. Customer account expenses and general and administrative expenses, on a combined basis, increased by about \$138,000 compared to 2014.

On a year-to-year comparative basis, the June 2015 results were not as good as the June 2014 results. For the period ended June 2015, SHELD shows a year-to-date loss of about \$499,000.

At June 31, 2015, SHELD shows a very healthy financial position. When compared to other companies in the electric power distribution industry, SHELD's 2015 liquidity and leverage ratios equal or exceed those of its peers.

**TOWN OF SOUTH HADLEY, MASSACHUSETTS
ELECTRIC LIGHT DEPARTMENT
STATEMENT OF NET POSITION
JUNE 30, 2015 AND 2014**

Assets			Liabilities and Net Position		
	<u>2015</u>	<u>2014</u>		<u>2015</u>	<u>2014</u>
Capital Assets			Long Term Liabilities		
Distribution Plant	\$ 29,293,104	\$ 30,141,312	Accrued Compensated Absences	\$ 1,167,720	\$ 1,027,729
General Plant	5,713,655	6,320,499	Other Post-Employment Benefit	581,006	475,404
Construction-in-Progress	577,055	13,927			
Total	<u>35,583,814</u>	<u>36,475,738</u>	Total	<u>1,748,726</u>	<u>1,503,133</u>
Less Accumulated Depreciation	29,696,298	30,411,681	Less Current Portion	257,096	244,265
Total Capital Assets	<u>5,887,516</u>	<u>6,064,057</u>	Total Long Term Liabilities	<u>1,491,630</u>	<u>1,258,868</u>
Restricted Assets			Current Liabilities		
Cash - Depreciation Fund	4,816,944	4,780,160	CP of Accrued Compensated Absences	208,304	199,146
Cash - Customer Deposits	193,027	192,600	CP of Post-Employment Benefits	48,792	45,119
Investment - OPEB Liability Trust	622,357	620,049	Accounts Payable	522,561	417,051
Deferred Charges	1,085,783	1,076,754	Customer Deposits	193,027	192,600
Total Restricted Assets	<u>6,718,111</u>	<u>6,669,563</u>	Accrued Expenses	10,346	11,802
Current Assets			Total Current Liabilities	<u>983,030</u>	<u>865,718</u>
Cash - Operating Fund	3,022,514	1,656,513	Net Position		
Investment - MLDM Reserve Trust	11,730,934	11,636,748	Net Investment in Capital Assets	5,887,516	6,064,057
Accounts Receivable - Net of Allowance	320,503	901,691	Restricted	5,944,078	6,001,559
Inventory	438,976	466,616	Unrestricted	13,894,212	13,294,720
Prepaid Expense	57,396	65,218			
Other Assets	24,516	24,516	Total Net Position	<u>25,725,806</u>	<u>25,360,336</u>
Total Current Assets	<u>15,594,839</u>	<u>14,751,302</u>			
TOTAL ASSETS	<u>\$ 28,200,466</u>	<u>\$ 27,484,922</u>	TOTAL LIABILITIES AND NET POSITION	<u>\$ 28,200,466</u>	<u>\$ 27,484,922</u>

**TOWN OF SOUTH HADLEY, MASSACHUSETTS
ELECTRIC LIGHT DEPARTMENT
STATEMENT OF REVENUE AND EXPENSE
SIX MONTHS ENDED JUNE 30, 2015 AND 2014**

	2015	2014	Variance
Operating Revenues			
Residential	\$ 4,137,391	\$ 4,429,077	\$ (291,686)
Commercial	1,282,535	1,365,074	(82,539)
Industrial	1,583,441	1,662,504	(79,063)
Municipal	449,178	471,873	(22,695)
Other	30,917	35,935	(5,018)
Total Operating Revenues	7,483,462	7,964,463	(481,001)
Operating Expense			
Cost of Power Sold			
Purchased Power	5,011,144	5,689,765	(678,621)
Transmission Expense	1,000,120	916,602	83,518
Supplies and Expenses	86,298	79,963	6,335
Total Cost of Power Sold	6,097,562	6,686,330	(588,768)
Distribution Expense			
Salaries and Wages	317,745	282,652	35,093
Supplies and Expenses	150,792	127,974	22,818
Total Distribution Expenses	468,537	410,626	57,911
Customer Accounts Expense			
Salaries and Wages	95,211	86,697	8,514
Supplies and Expenses	39,783	37,774	2,009
Uncollectible Accounts	-	-	-
Total Customer Accounts Expenses	134,994	124,471	10,523
General and Administrative Expense			
Salaries and Wages	242,746	135,473	107,273
Insurance	45,926	34,907	11,019
Pension and Benefits	220,180	250,244	(30,064)
General	40,690	39,194	1,496
Supplies and Expenses	115,372	104,331	11,041
Legal Expense	48,946	21,902	27,044
Total General and Administrative Expenses	713,860	586,051	127,809
Depreciation Expense	526,502	533,875	(7,373)
Total Operating Expenses	7,941,455	8,341,353	(399,898)
Operating Income (Loss)	(457,993)	(376,890)	(81,103)
Nonoperating Revenues	(40,675)	138,425	(179,100)
Income (Loss) Before Capital Contributions and Transfer Out	\$ (498,668)	\$ (238,465)	\$ (260,203)

**TOWN OF SOUTH HADLEY, MASSACHUSETTS
ELECTRIC LIGHT DEPARTMENT
STATEMENT OF CASH FLOWS
SIX MONTHS ENDED JUNE 30, 2015 AND 2014**

	<u>2015</u>	<u>2014</u>	<u>Variance</u>
Cash Flows from Operating Activities			
Receipts from Customers	\$ 7,995,438	\$ 8,204,593	\$ (209,155)
Payments to Power Suppliers	(6,121,908)	(6,640,666)	518,758
Payments to Employees	(673,328)	(515,874)	(157,454)
Payments for Other Operations	(662,831)	(986,379)	323,548
Net Cash Provided by (Used in) Operating Activities	<u>537,371</u>	<u>61,674</u>	<u>475,697</u>
Cash Flows from Financing Activities*			
Acquisition of Capital Assets	(583,279)	(547,302)	(35,977)
Proceeds from Disposition of Capital Assets	3,003		3,003
Capital Contribution	32,463	117,174	(84,711)
Transfers Out	(68,237)	(76,453)	8,216
Net Cash Provided by (Used in) Financing Activities	<u>(616,050)</u>	<u>(506,581)</u>	<u>(109,469)</u>
Cash Flows from Investing Activities			
Nonoperating Revenues	89,681	138,425	(179,100)
Acquisition of Investment - OPEB Liability Trust	538	(32,491)	33,029
Acquisition of Investment - MLDM Reserve Trust	(43,759)	(37,547)	(6,212)
Net Cash Provided by (Used in) Investing Activities	<u>46,460</u>	<u>68,387</u>	<u>(152,283)</u>
Net Increase (Decrease) in Cash	(32,219)	(376,520)	213,945
Cash - Beginning	8,064,705	7,005,794	1,058,911
Cash - Ending	<u>\$ 8,032,486</u>	<u>\$ 6,629,274</u>	<u>\$ 1,272,856</u>
Reconciliation of Operating Income (Loss) to Net Cash Provided (Used) by Operating Activities			
Operating Income (Loss)	\$ (457,993)	\$ (376,890)	(81,103)
Adjustment to Reconcile Operating Income (Loss) to Net Cash Provided by (Used in) Operating Activities:			
Depreciation	526,502	533,875	(7,373)
Changes in Assets and Liabilities:			
Deferred Charges	(5,168)	(24,131)	18,963
Accounts Receivable	511,976	240,130	271,846
Inventory	-	-	-
Prepaid Expense	(31,321)	(49,007)	17,686
Other Current Assets	-	-	-
Accounts Payable	(149,613)	(349,263)	199,650
Customer Deposits	13,177	38,300	(25,123)
Accrued Liabilities	(14,391)	(1,340)	(13,051)
Accrued Compensated Absences	126,202	32,000	94,202
Other Post-Employment Benefits	18,000	18,000	-
Net Cash Provided by (Used in) Operating Activities	<u>\$ 537,371</u>	<u>\$ 61,674</u>	<u>\$ 475,697</u>

* Non-capital and Capital Financing Activities Combined

**TOWN OF SOUTH HADLEY, MASSACHUSETTS
ELECTRIC LIGHT DEPARTMENT
SCHEDULE OF ELECTRIC REVENUES, COST OF POWER, AND KILOWATT HOURS
SIX MONTHS ENDED JUNE 30, 2015 AND 2014**

	2015		2014		Variance	
	<u>\$ Amount</u>	<u>KWH</u>	<u>\$ Amount</u>	<u>KWH</u>	<u>\$ Amount</u>	<u>KWH</u>
Sale of Electricity						
Residential	\$ 4,137,391	30,390,969	\$ 4,429,077	30,954,113	\$ (291,686)	(563,144)
Commercial	1,282,535	8,721,637	1,365,074	8,831,253	(82,539)	(109,616)
Industrial	1,583,441	12,991,150	1,662,504	12,830,421	(79,063)	160,729
Municipal	449,178	3,512,726	471,873	3,535,986	(22,695)	(23,260)
Other	30,917	161,709	35,935	174,273	(5,018)	(12,564)
Total Sale of Electricity	<u>\$ 7,483,462</u>	<u>55,778,191</u>	<u>\$ 7,964,463</u>	<u>56,326,046</u>	<u>\$ (481,001)</u>	<u>(547,855)</u>
\$ / KWH	<u>\$ 0.134165</u>		<u>\$ 0.141399</u>		<u>\$ (0.007234)</u>	
Cost of Power						
Purchased Power	5,011,144	58,387,042	5,689,765	57,343,669	(678,621)	1,043,373
Transmission Expense	1,000,120		916,602		83,518	
Supplies and Expenses	86,298		79,963		6,335	
Total Cost of Power	<u>\$ 6,097,562</u>	<u>58,387,042</u>	<u>\$ 6,686,330</u>	<u>57,343,669</u>	<u>\$ (588,768)</u>	<u>1,043,373</u>
\$ / KWH	<u>\$ 0.104433</u>		<u>\$ 0.116601</u>		<u>\$ (0.012168)</u>	
Gross Profit	<u>\$ 1,385,900</u>		<u>\$ 1,278,133</u>		<u>\$ 197,620</u>	

**TOWN OF SOUTH HADLEY, MASSACHUSETTS
ELECTRIC LIGHT DEPARTMENT
PERCENT OF REVENUE ANALYSIS
SIX MONTHS ENDED JUNE 30, 2015 AND 2014**

	<u>2015</u>	<u>2014</u>	<u>Variance</u>
Operating Revenues			
Residential	55.29	55.61	(0.32)
Commercial	17.14	17.14	0.00
Industrial	21.16	20.87	0.29
Municipal	6.00	5.92	0.08
Other	0.41	0.46	(0.05)
Total Operating Revenues	<u>100.00</u>	<u>100.00</u>	<u>(0.00)</u>
Operating Expense			
Cost of Power Sold			
Purchased Power	66.96	71.44	(4.48)
Transmission Expense	13.36	11.51	1.85
Supplies and Expenses	1.15	1.00	0.15
Total Cost of Electricity Sold	<u>81.47</u>	<u>83.95</u>	<u>(2.48)</u>
Distribution Expense			
Salaries and Wages	4.25	3.55	0.70
Supplies and Expenses	2.02	1.61	0.41
Total Distribution Expenses	<u>6.27</u>	<u>5.16</u>	<u>1.11</u>
Customer Accounts Expense			
Salaries and Wages	1.27	1.09	0.18
Supplies and Expenses	0.53	0.47	0.06
Uncollectible Accounts	0.00	0.00	0.00
Total Customer Accounts Expenses	<u>1.80</u>	<u>1.56</u>	<u>0.24</u>
General and Administrative Expense			
Salaries and Wages	3.24	1.70	1.54
Insurance	0.61	0.44	0.17
Pension and Benefits	2.94	3.14	(0.20)
General	0.54	0.49	0.05
Supplies and Expenses	1.54	1.31	0.23
Legal Expense	0.65	0.27	0.38
Total General and Administrative Expenses	<u>9.52</u>	<u>7.35</u>	<u>2.17</u>
Depreciation Expense	7.04	6.70	0.34
Total Operating Expenses	<u>106.10</u>	<u>104.72</u>	<u>1.38</u>
Operating Income (Loss)	(6.10)	(4.72)	(1.38)
Nonoperating Revenues	(0.54)	1.74	(2.28)
Income (Loss) Before Capital Contributions and Transfer Out	<u>(6.64)</u>	<u>(2.98)</u>	<u>(3.66)</u>

**TOWN OF SOUTH HADLEY, MASSACHUSETTS
ELECTRIC LIGHT DEPARTMENT
STATEMENT OF REVENUE AND EXPENSE
JUNE 30, 2015 AND 2014**

	<u>2015</u>	<u>2014</u>	<u>Variance</u>
Operating Revenues			
Residential	\$ 563,947	\$ 602,035	\$ (38,088)
Commercial	217,596	220,954	(3,358)
Industrial	266,691	285,161	(18,470)
Municipal	61,474	65,133	(3,659)
Other	3,969	5,983	(2,014)
Total Operating Revenues	<u>1,113,677</u>	<u>1,179,266</u>	<u>(65,589)</u>
Operating Expense			
Cost of Power Sold			
Purchased Power	719,322	786,201	(66,879)
Transmission Expense	205,371	98,822	106,549
Supplies and Expenses	19,332	12,629	6,703
Total Cost of Power Sold	<u>944,025</u>	<u>897,652</u>	<u>46,373</u>
Distribution Expense			
Salaries and Wages	51,370	42,117	9,253
Supplies and Expenses	25,125	22,028	3,097
Total Distribution Expenses	<u>76,495</u>	<u>64,145</u>	<u>12,350</u>
Customer Accounts Expense			
Salaries and Wages	14,933	13,702	1,231
Supplies and Expenses	(1,246)	(1,293)	47
Uncollectible Accounts	-	-	-
Total Customer Accounts Expenses	<u>13,687</u>	<u>12,409</u>	<u>1,278</u>
General and Administrative Expense			
Salaries and Wages	38,986	21,138	17,848
Insurance	11,451	5,847	5,604
Pension and Benefits	3,318	39,786	(36,468)
General	1,500	2,829	(1,329)
Supplies and Expenses	40,742	21,322	19,420
Legal Expense	13,299	4,213	9,086
Total General and Administrative Expenses	<u>109,296</u>	<u>95,135</u>	<u>14,161</u>
Depreciation Expense	89,317	88,979	338
Total Operating Expenses	<u>1,232,820</u>	<u>1,158,320</u>	<u>74,500</u>
Operating Income (Loss)	(119,143)	20,946	(140,089)
Nonoperating Revenues	14,017	21,284	(7,267)
Income (Loss) Before Capital Contributions and Transfer Out	<u>(105,126)</u>	<u>42,230</u>	<u>\$ (147,356)</u>

**TOWN OF SOUTH HADLEY, MASSACHUSETTS
ELECTRIC LIGHT DEPARTMENT
STATEMENT OF CASH FLOWS
JUNE 30, 2015 AND 2014**

	<u>2015</u>	<u>2014</u>	<u>Variance</u>
Cash Flows from Operating Activities			
Receipts from Customers	\$ 1,278,890	\$ 1,165,115	\$ 113,775
Payments to Power Suppliers	(613,238)	(809,860)	196,622
Payments to Employees	(105,288)	(76,956)	(28,332)
Payments for Other Operations	(325,376)	(369,348)	43,972
Net Cash Provided by (Used in) Operating Activities	<u>234,988</u>	<u>(91,049)</u>	<u>326,037</u>
Cash Flows from Financing Activities*			
Acquisition of Capital Assets	(45,589)	(160,423)	114,834
Proceeds from Disposition of Capital Assets			-
Capital Contribution	32,463	95,152	(62,689)
Transfers Out	(11,372)	(12,745)	1,373
Net Cash Provided by (Used in) Financing Activities	<u>(24,498)</u>	<u>(78,016)</u>	<u>53,518</u>
Cash Flows from Investing Activities			
Nonoperating Revenues	14,017	21,284	(179,100)
Acquisition of Investment - OPEB Liability Trust	9,149	(6,425)	15,574
Acquisition of Investment - MLDM Reserve Trust	(12,543)	(7,972)	(4,571)
Net Cash Provided by (Used in) Investing Activities	<u>10,623</u>	<u>6,887</u>	<u>(168,097)</u>
Net Increase (Decrease) in Cash	221,113	(162,178)	211,458
Cash - Beginning	7,811,372	6,791,451	1,019,921
Cash - Ending	<u>\$ 8,032,485</u>	<u>\$ 6,629,273</u>	<u>\$ 1,231,379</u>
Reconciliation of Operating Income (Loss) to Net Cash Provided (Used) by Operating Activities			
Operating Income (Loss)	\$ (119,143)	\$ 20,946	\$ (140,089)
Adjustment to Reconcile Operating Income (Loss) to Net Cash Provided by (Used in) Operating Activities:			
Depreciation	89,317	88,979	338
Changes in Assets and Liabilities:			
Deferred Charges	(734)	(15,734)	15,000
Accounts Receivable	165,213	(14,151)	179,364
Inventory	-	-	-
Prepaid Expense	(4,436)	6,031	(10,467)
Other Current Assets	-	-	-
Accounts Payable	119,036	31,034	88,002
Customer Deposits	6,083	2,450	3,633
Accrued Liabilities	(34,950)	896	(35,846)
Accrued Compensated Absences	11,602	(214,500)	226,102
Other Post-Employment Benefits	3,000	3,000	-
Net Cash Provided by (Used in) Operating Activities	<u>\$ 234,988</u>	<u>\$ (91,049)</u>	<u>\$ 326,037</u>

* Non-capital and Capital Financing Activities Combined

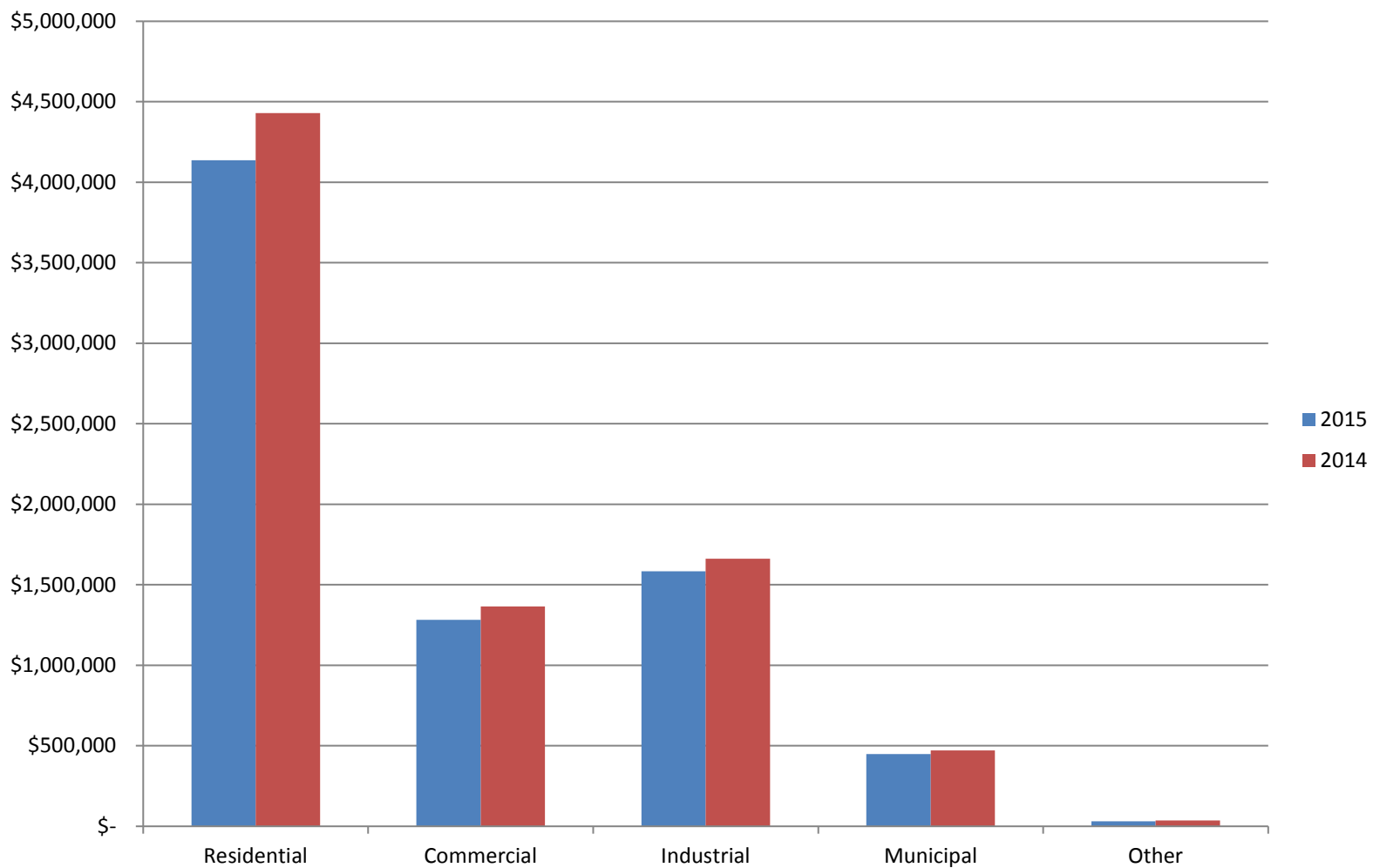
**TOWN OF SOUTH HADLEY, MASSACHUSETTS
ELECTRIC LIGHT DEPARTMENT
SCHEDULE OF ELECTRIC REVENUES, COST OF POWER, AND KILOWATT HOURS
JUNE 30, 2015 AND 2014**

	2015		2014		Variance	
	\$ Amount	KWH	\$ Amount	KWH	\$ Amount	KWH
Sale of Electricity						
Residential	\$ 563,947	4,203,159	\$ 602,035	4,110,177	\$ (38,088)	92,982
Commercial	217,596	1,522,065	220,954	1,441,534	(3,358)	80,531
Industrial	266,691	2,284,309	285,161	2,210,672	(18,470)	73,637
Municipal	61,474	478,439	65,133	468,828	(3,659)	9,611
Other	3,969	27,911	5,983	29,107	(2,014)	(1,196)
Total Sale of Electricity	<u>\$ 1,113,677</u>	<u>8,515,883</u>	<u>\$ 1,179,266</u>	<u>8,260,318</u>	<u>\$ (65,589)</u>	<u>255,565</u>
\$ / KWH	<u>\$ 0.130776</u>		<u>\$ 0.142763</u>		<u>\$ (0.011987)</u>	
Cost of Power						
Purchased Power	719,322	8,918,395	786,201	9,174,394	(66,879)	(255,999)
Transmission Expense	205,371		98,822		106,549	
Supplies and Expenses	19,332		12,629		6,703	
Total Cost of Power	<u>\$ 944,025</u>	<u>8,918,395</u>	<u>\$ 897,652</u>	<u>9,174,394</u>	<u>\$ 46,373</u>	<u>(255,999)</u>
\$ / KWH	<u>\$ 0.105851</u>		<u>\$ 0.097843</u>		<u>\$ 0.008008</u>	
Gross Profit	<u>\$ 169,652</u>		<u>\$ 281,614</u>		<u>\$ 1,290</u>	

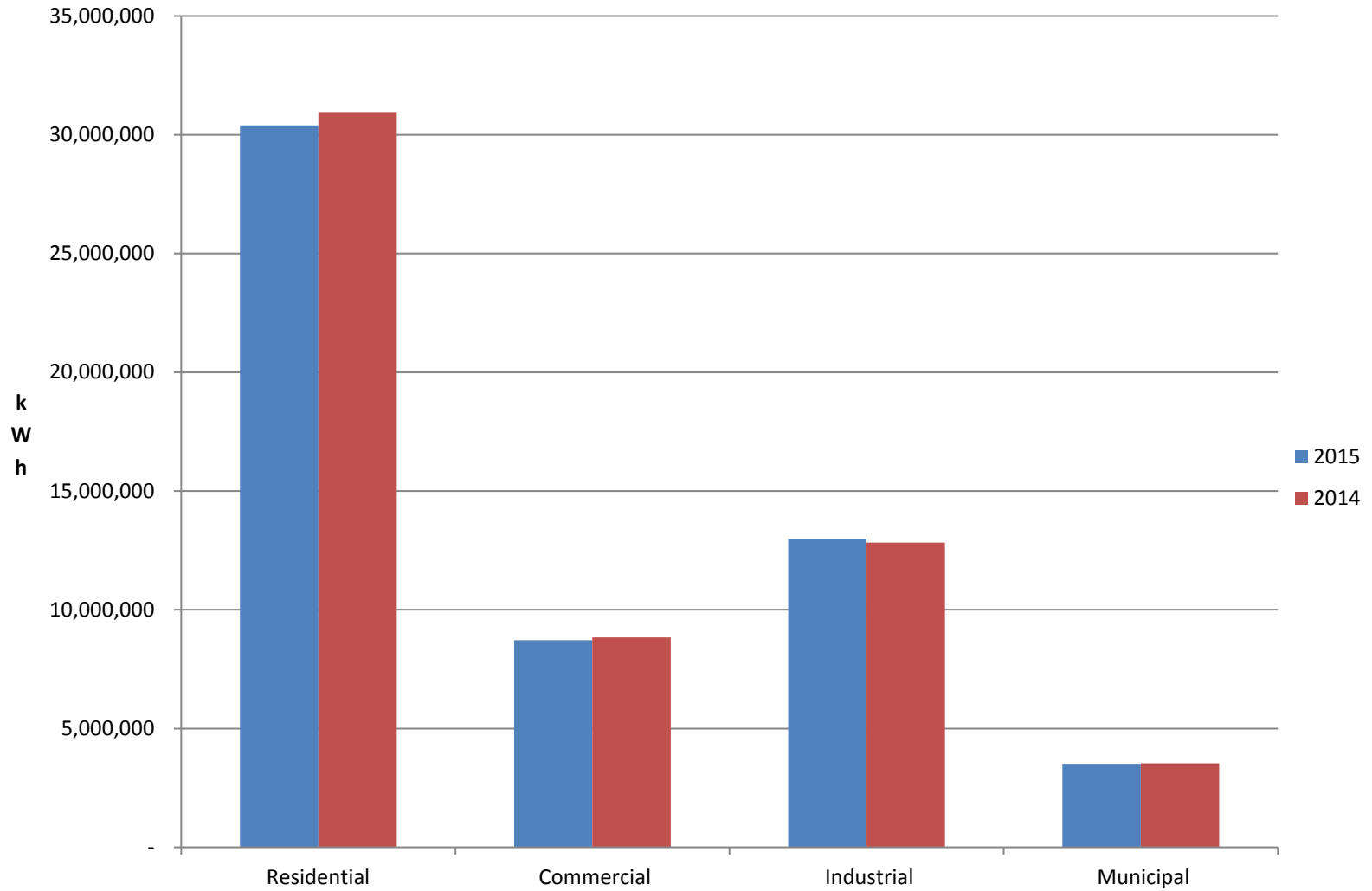
**TOWN OF SOUTH HADLEY, MASSACHUSETTS
ELECTRIC LIGHT DEPARTMENT
PERCENT OF REVENUE ANALYSIS
JUNE 30, 2015 AND 2014**

	<u>2015</u>	<u>2014</u>	<u>Variance</u>
Operating Revenues			
Residential	50.64	51.05	(0.41)
Commercial	19.54	18.74	0.80
Industrial	23.95	24.18	(0.23)
Municipal	5.52	5.52	0.00
Other	0.36	0.51	(0.15)
Total Operating Revenues	<u>100.01</u>	<u>100.00</u>	<u>0.01</u>
Operating Expense			
Cost of Power Sold			
Purchased Power	64.59	66.67	(2.08)
Transmission Expense	18.44	8.38	10.06
Supplies and Expenses	1.74	1.07	0.67
Total Cost of Power Sold	<u>84.77</u>	<u>76.12</u>	<u>8.65</u>
Distribution Expense			
Salaries and Wages	4.61	3.57	1.04
Supplies and Expenses	2.26	1.87	0.39
Total Distribution Expenses	<u>6.87</u>	<u>5.44</u>	<u>1.43</u>
Customer Accounts Expense			
Salaries and Wages	1.34	1.16	0.18
Supplies and Expenses	(0.11)	(0.11)	0.00
Uncollectible Accounts	0.00	0.00	0.00
Total Customer Accounts Expenses	<u>1.23</u>	<u>1.05</u>	<u>0.18</u>
General and Administrative Expense			
Salaries and Wages	3.50	1.79	1.71
Insurance	1.03	0.50	0.53
Pension and Benefits	0.30	3.37	(3.07)
General	0.13	0.24	(0.11)
Supplies and Expenses	3.66	1.81	1.85
Legal Expense	1.19	0.36	0.83
Total General and Administrative Expenses	<u>9.81</u>	<u>8.07</u>	<u>1.74</u>
Depreciation Expense	8.02	7.55	0.47
Total Operating Expenses	<u>110.70</u>	<u>98.23</u>	<u>12.47</u>
Operating Income (Loss)	(10.69)	1.77	(12.46)
Nonoperating Revenues	1.26	1.80	(0.54)
Income (Loss) Before Capital Contributions and Transfer Out	<u>(9.43)</u>	<u>3.57</u>	<u>(13.00)</u>

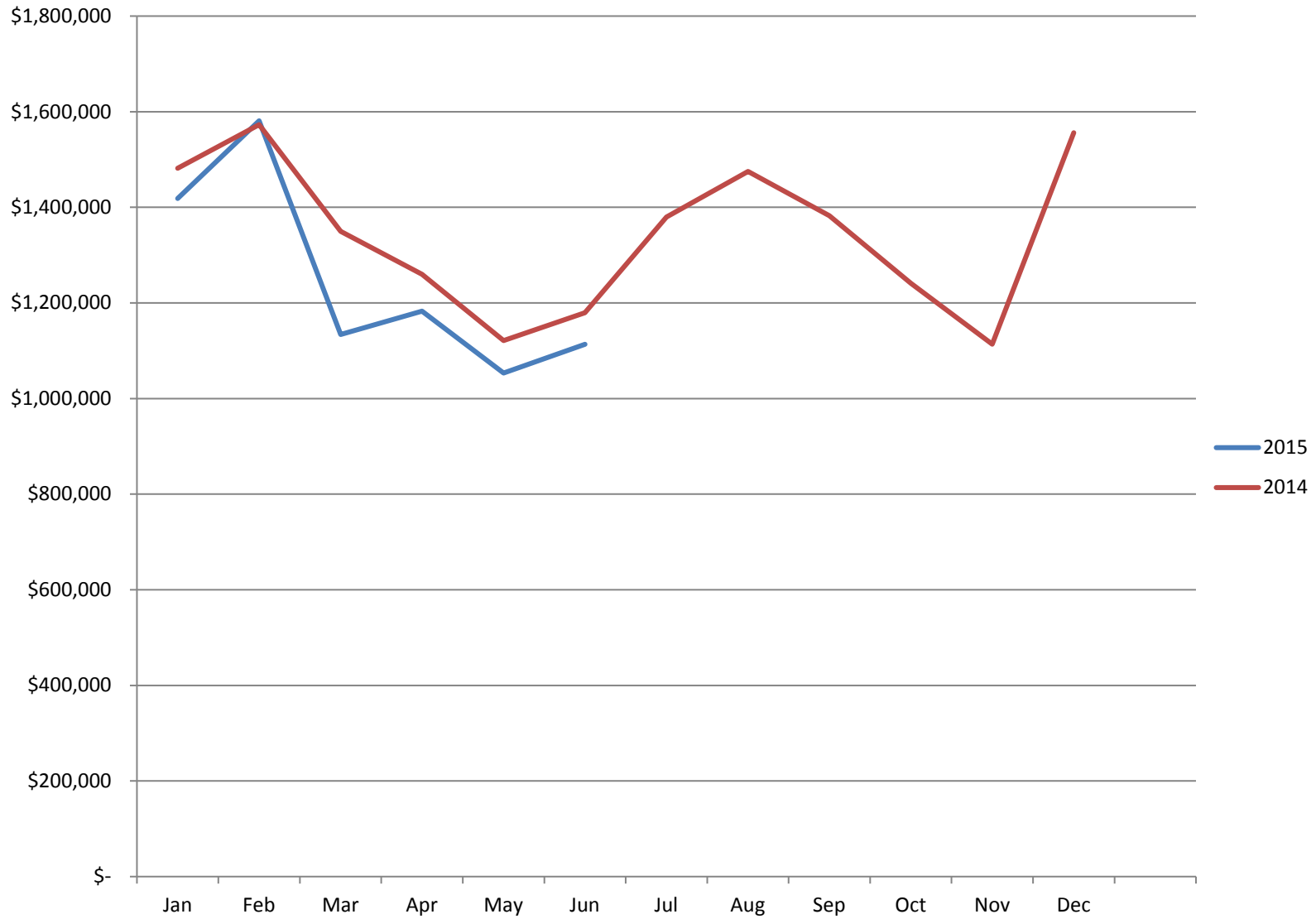
2015 / 2014 Electric Revenues by Rate Class



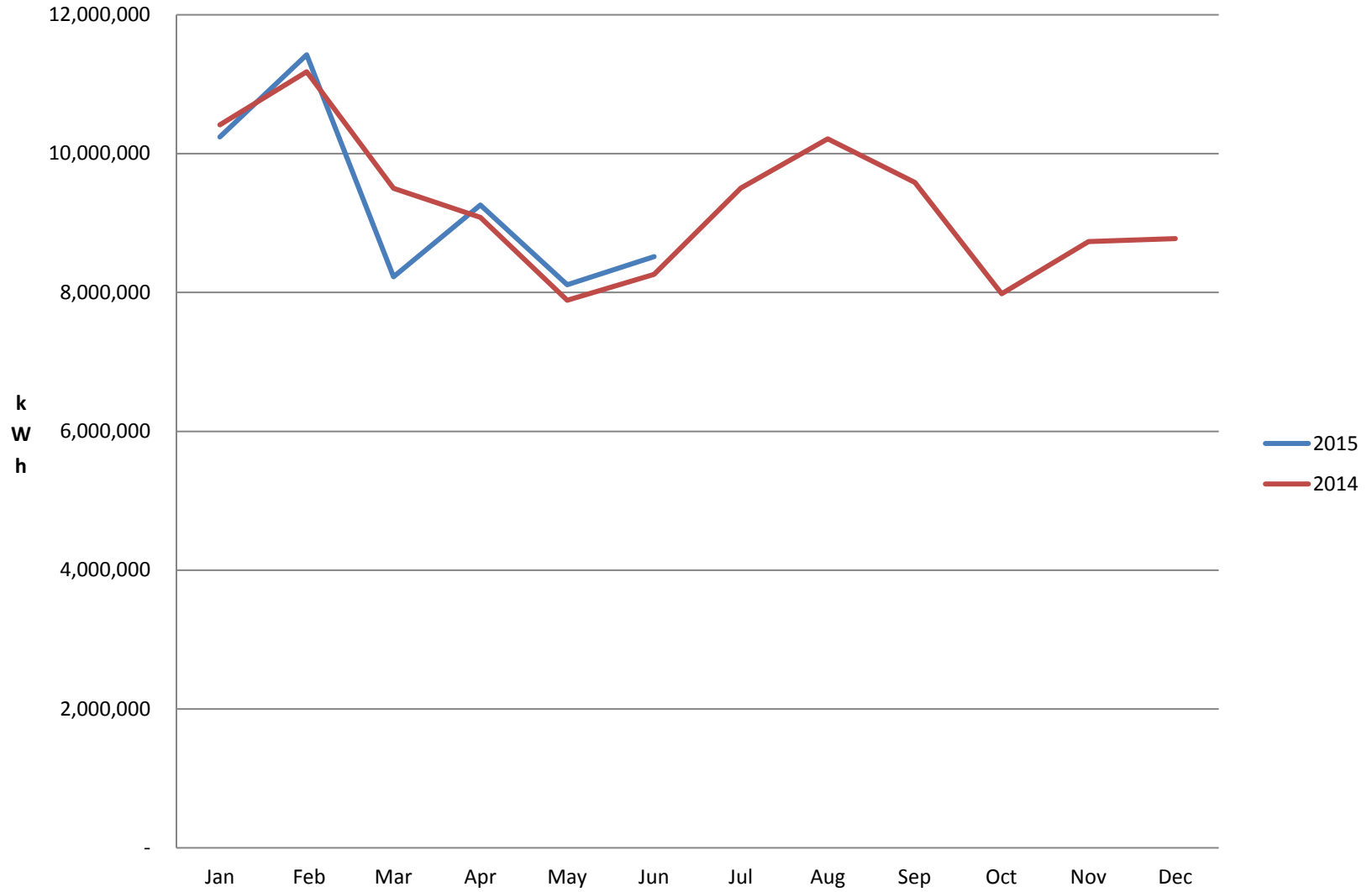
2015 / 2014 kWh Sales by Rate Class



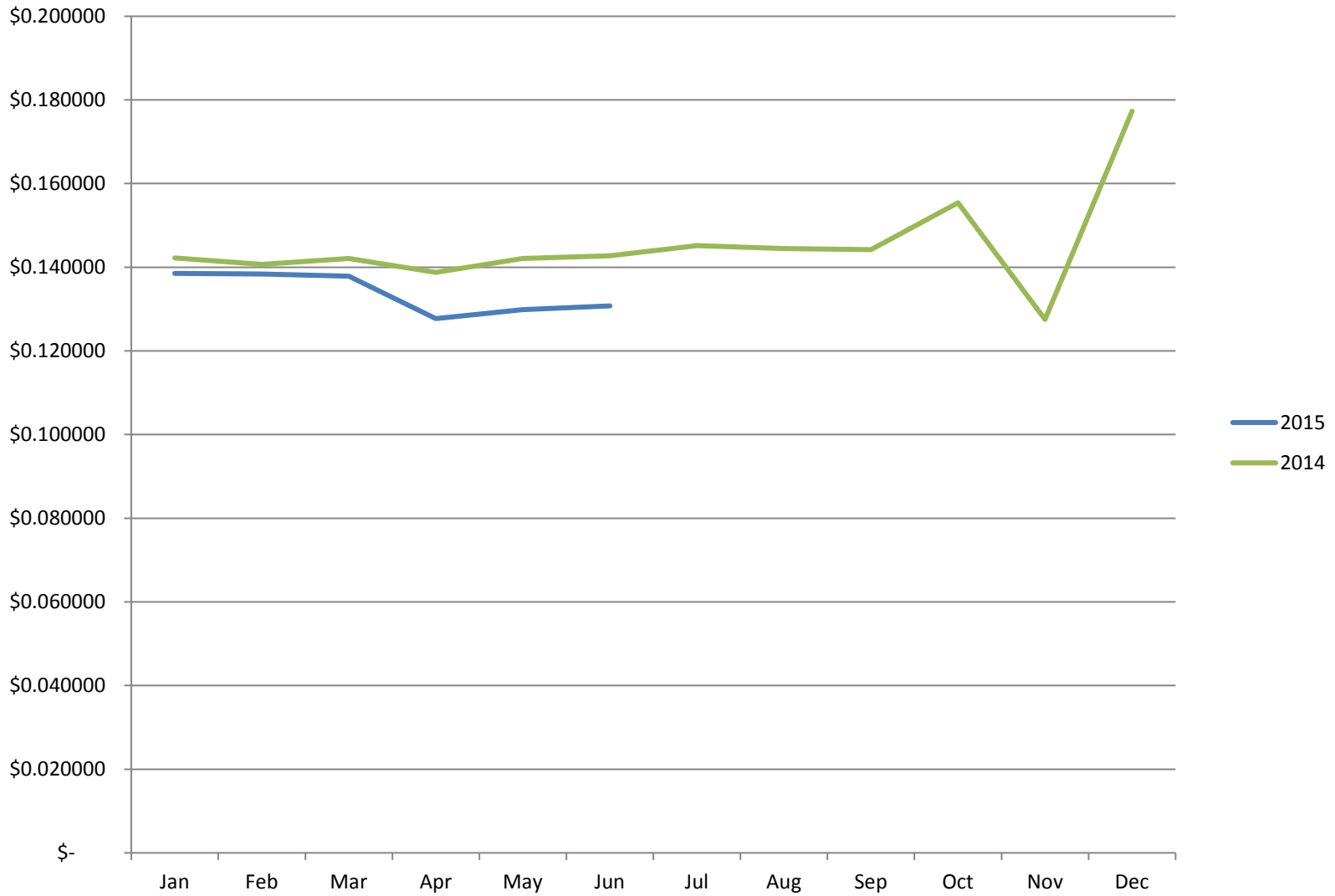
Monthly Electric Revenues



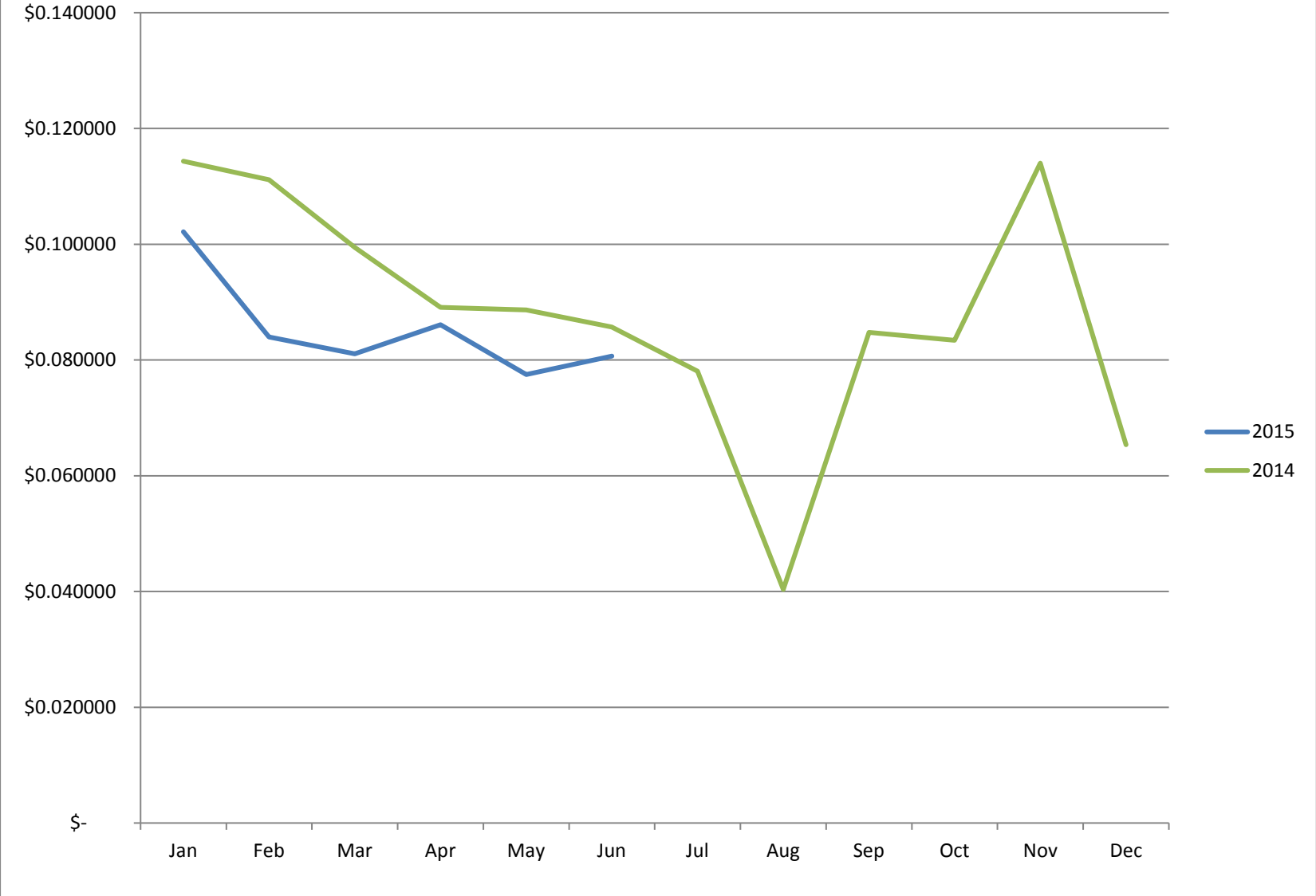
Monthly kWh Sales



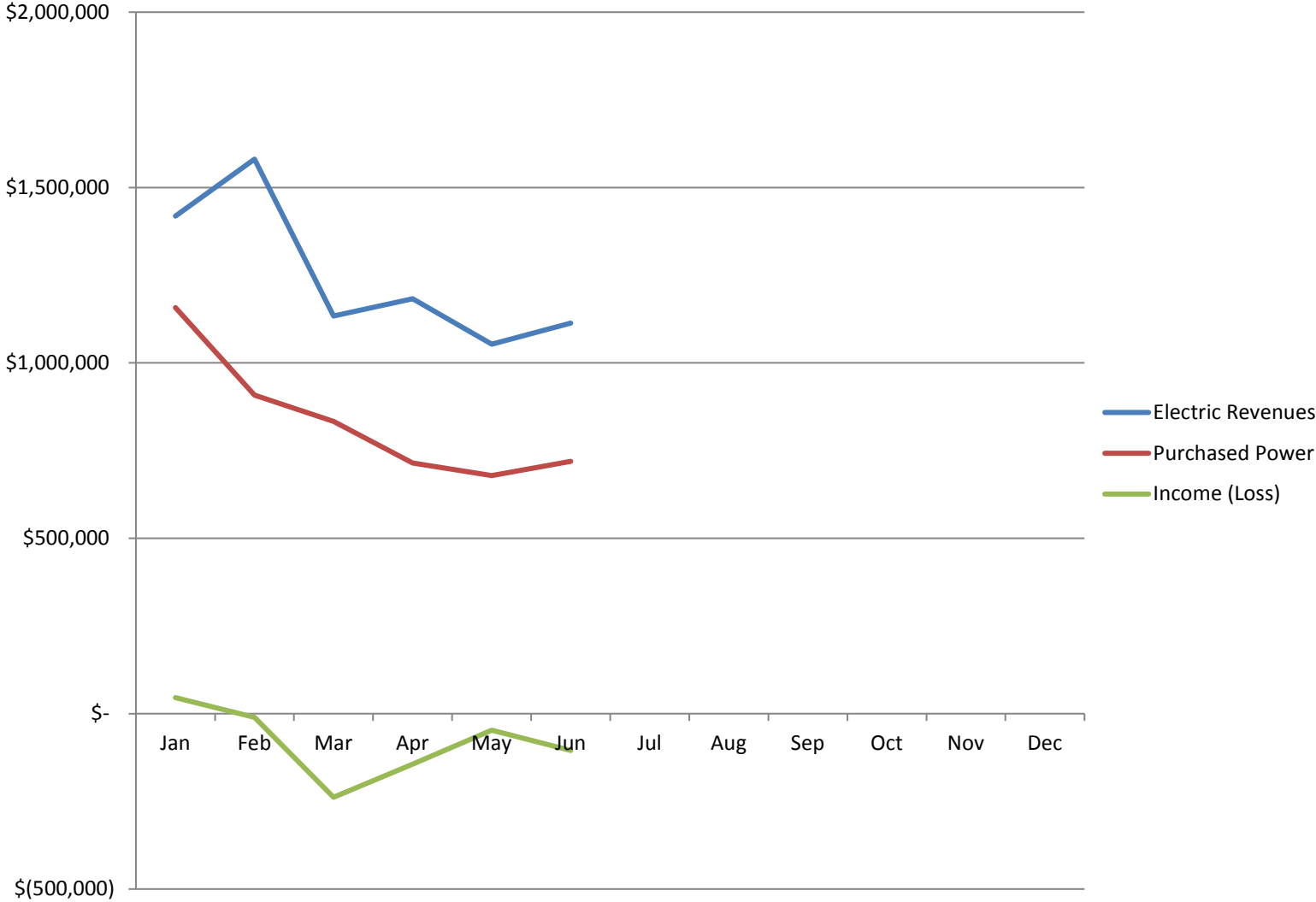
Average Price per kWh Sold



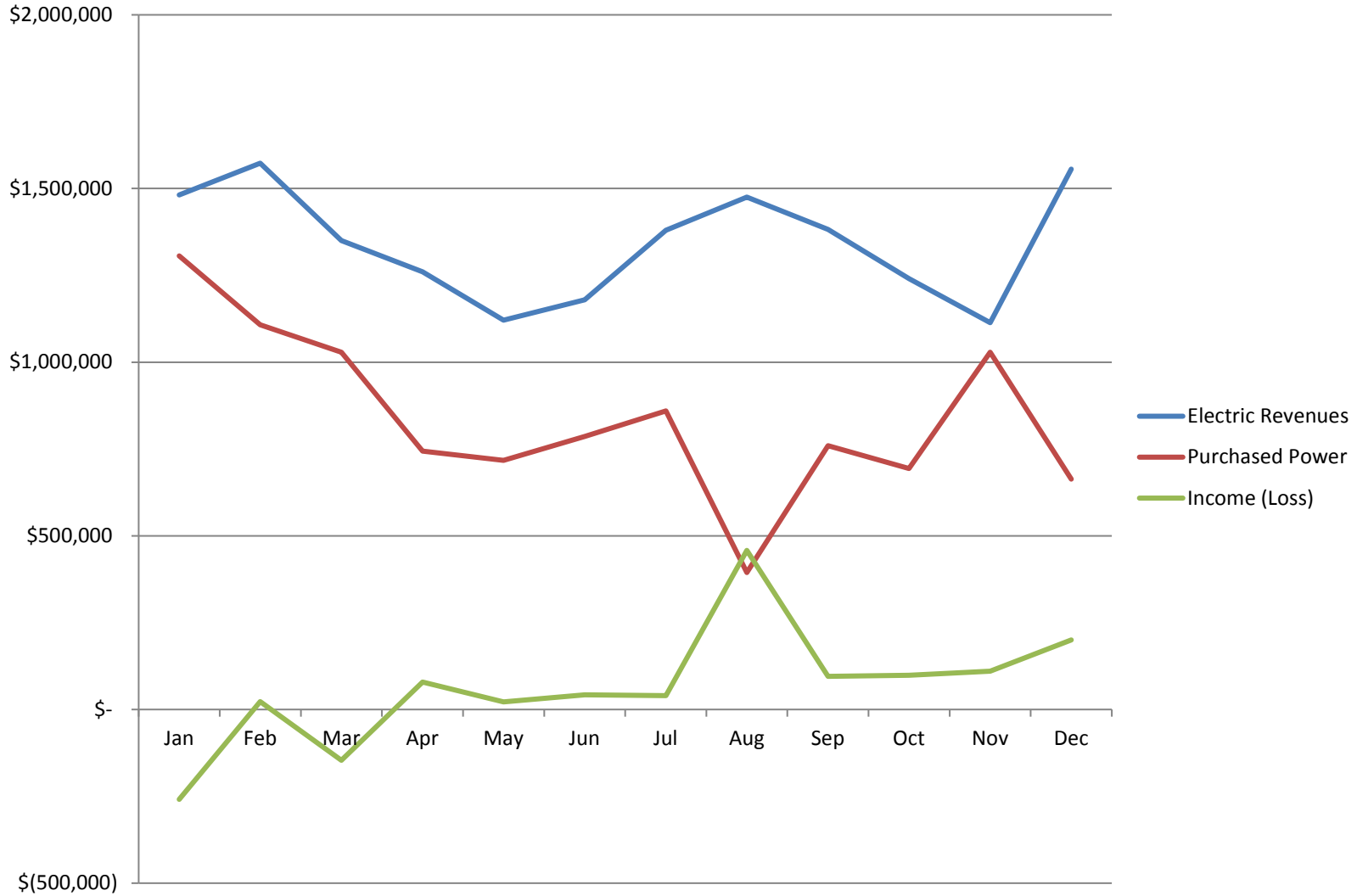
Average Cost per kWh Purchased



2015 Monthly Operations



2014 Monthly Operations



**TOWN OF SOUTH HADLEY, MASSACHUSETTS
ELECTRIC LIGHT DEPARTMENT
COMPENSATED ABSENCE ACCRUAL
JUNE 30, 2015**

<u>Pay Rate</u>	<u>Vacation</u>		<u>Sick</u>		<u>Personal</u>	
	<u>Hours</u>	<u>Benefit</u>	<u>Hours</u>	<u>Benefit</u>	<u>Hours</u>	<u>Benefit</u>
Employee	144.00		780.00		16.00	
Employee	7.00		48.90		24.50	
Employee	240.00		882.75		8.00	
Employee	80.50		194.25		10.50	
Employee	72.00		2,138.25		20.00	
Employee	60.00		0.75		0.00	
Employee	185.50		936.00		0.00	
Employee	1,183.00		1,449.75		0.00	
Employee	120.00		637.50		8.00	
Employee	96.00		119.50		16.00	
Employee	3,008.00		3,917.00		56.00	
Employee	0.00		64.00		0.00	
Employee	156.00		90.00		8.00	
Employee	0.00		83.00		0.00	
Employee	1,080.00		1,344.75		20.00	
Employee	48.00		49.50		0.00	
Employee	48.00		50.00		0.00	
Employee	465.00		4,307.58		0.00	
Employee	276.50		2,519.50		0.00	
Employee	40.00		106.50		8.00	
Totals	<u>7,309.50</u>	<u>360,073.93</u>	<u>19,719.48</u>	<u>799,084.79</u>	<u>195.00</u>	<u>8,561.63</u>
Total Liability at 06/30/15						<u><u>1,167,720.35</u></u>

SOUTH HADLEY ELECTRIC LIGHT DEPARTMENT

OUTAGE REPORTS

JUNE 2015

DAY	TIME OUT	TIME IN	Duration	LOCATION	POLE NO.	# OF CUST	CUST HOURS	CAUSE
18th	6/18/2015 13:30:00	6/18/2015 14:40:00	1.17	Ashton Lane		7	8.17	L
23rd	6/23/2015 10:51:00	6/23/2015 11:41:00	0.83	Amherst Road/Old County Road	45	1	0.83	B
TOTALS			2.00			8	9.00	

- CAUSE -

- | | |
|----------------------|------------------------------|
| A. Equipment Failure | G. Bump |
| B. Lightning | H. Overload (Circuit) |
| C. Tree Condition | I. Overload (Transformer) |
| D. Auto Accident | J. Meter Problem |
| E. Customer Fault | K. Weather (Snow, Ice, Etc.) |
| F. Animal | L. Scheduled |

SOUTH HADLEY ELECTRIC LIGHT DEPARTMENT

OUTAGE REPORTS

JULY 2015

DAY	TIME OUT	TIME IN	Duration	LOCATION	POLE NO.	# OF CUST	CUST HOURS	CAUSE
7th	7/7/2015 1:55:00	7/7/2015 10:15:00	8.33	10 Maria Drive	62	1	8.33	D
7th	7/7/2015 1:55:00	7/7/2015 10:25:00	8.50	153 Lyman Street	62	1	8.50	D
7th	7/7/2015 1:55:00	7/7/2015 12:35:00	10.67	150 Lyman Street	62	1	10.67	D
7th	7/7/2015 4:20:00	7/7/2015 7:44:00	3.40	Lyman Street	62	471	1,601.40	D
7th	7/7/2015 14:30:00	7/7/2015 15:30:00	1.00	Old Mountain Road		3	3.00	C
17th	7/17/2015 9:03:00	7/17/2015 9:55:00	0.87	Main Street	4	16	13.87	L
TOTALS			32.77			493	1,645.77	

- CAUSE -

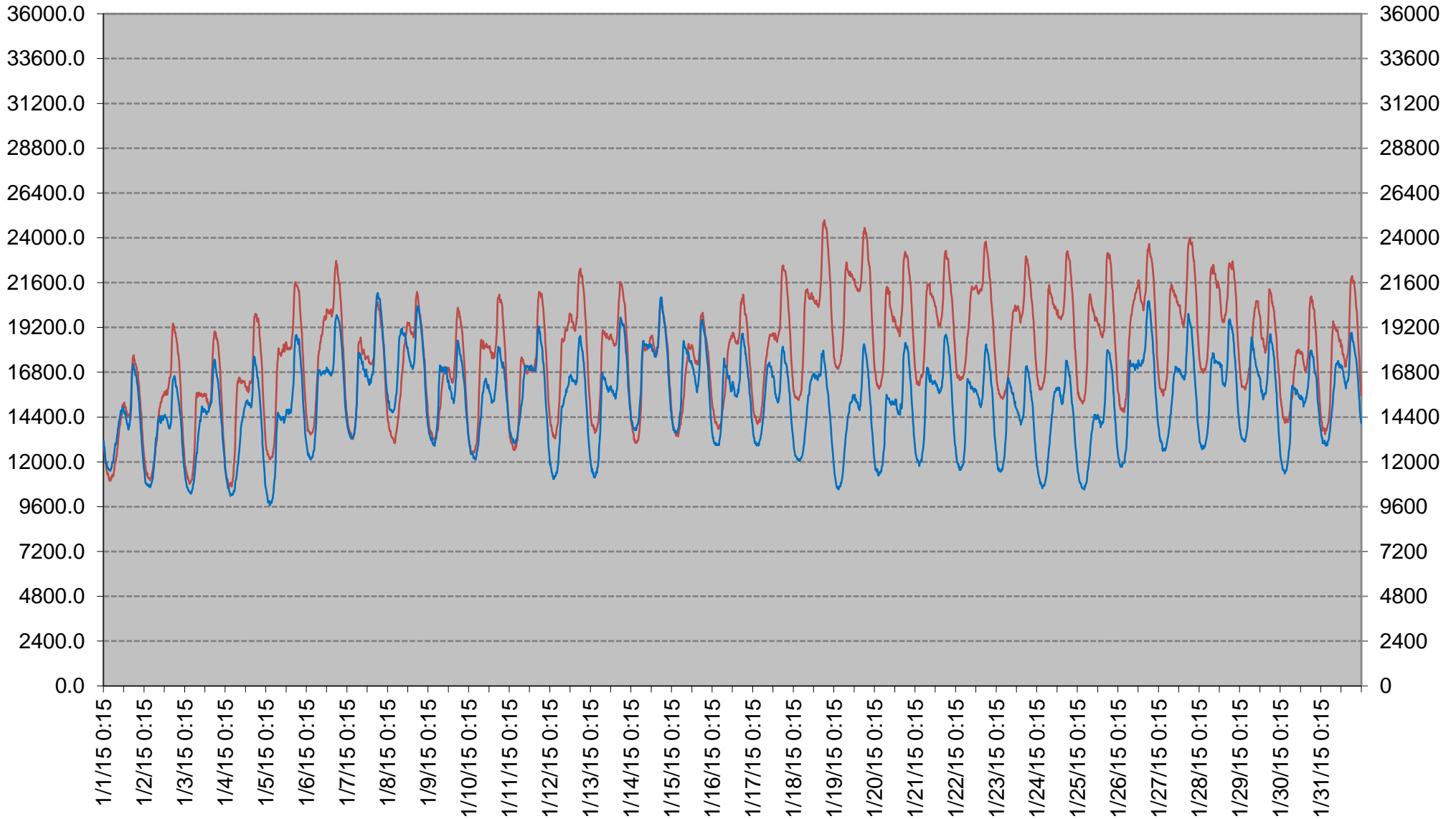
- | | |
|----------------------|------------------------------|
| A. Equipment Failure | G. Bump |
| B. Lightning | H. Overload (Circuit) |
| C. Tree Condition | I. Overload (Transformer) |
| D. Auto Accident | J. Meter Problem |
| E. Customer Fault | K. Weather (Snow, Ice, Etc.) |
| F. Animal | L. Scheduled |

**TOWN OF SOUTH HADLEY, MASSACHUSETTS
ELECTRIC LIGHT DEPARTMENT**

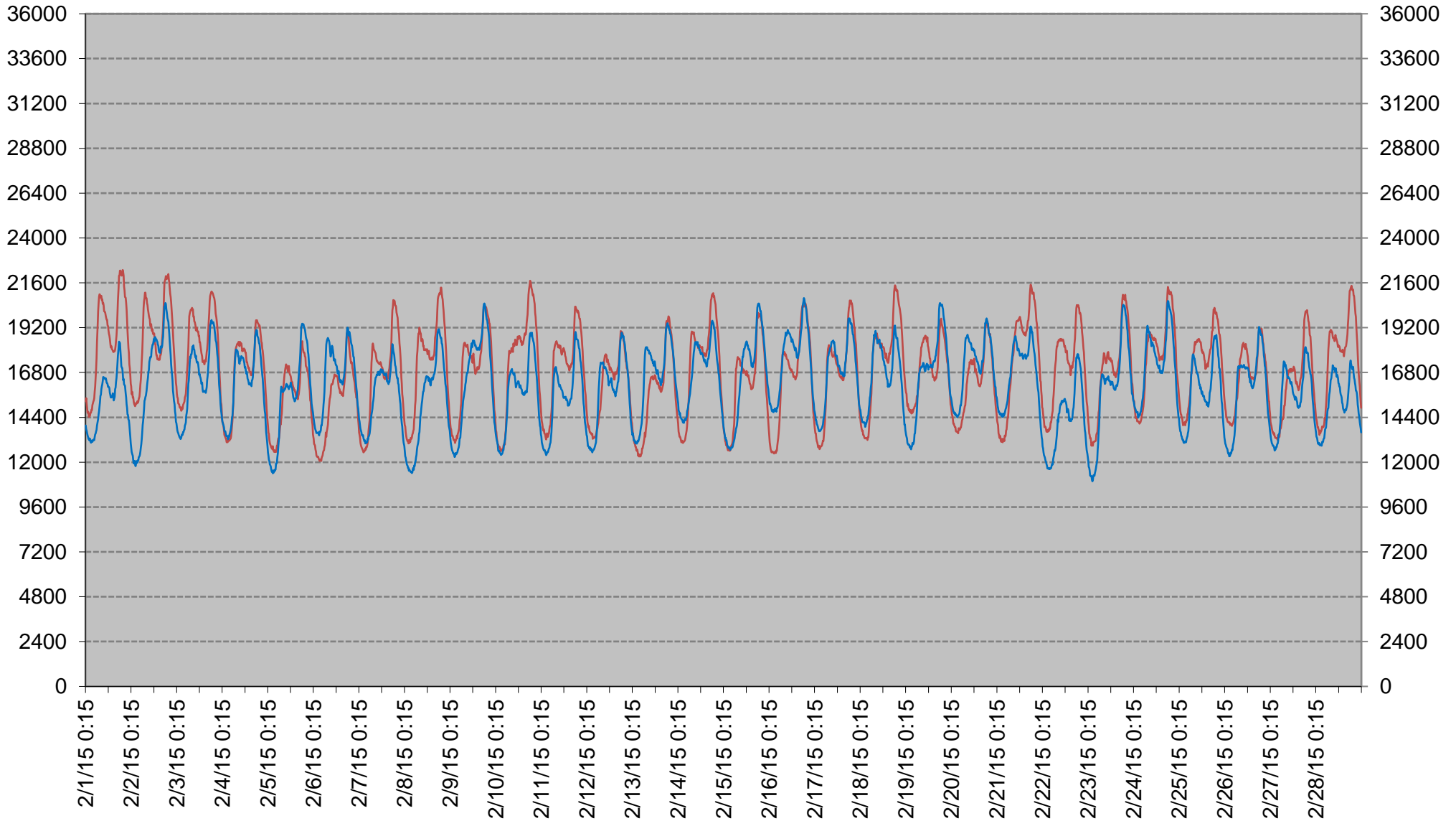


**MONTHLY LOAD DATA
JUNE 2015**

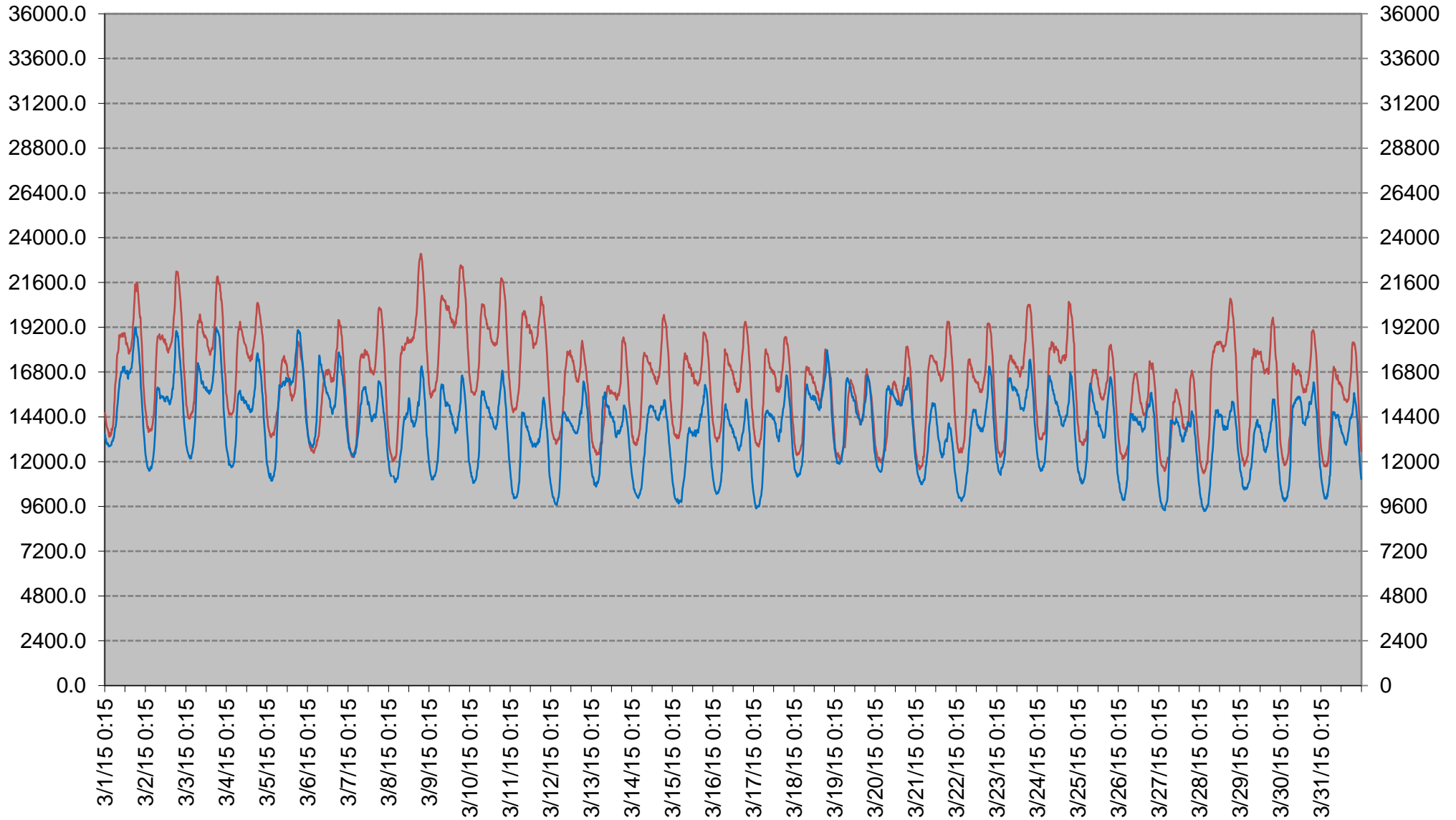
JANUARY



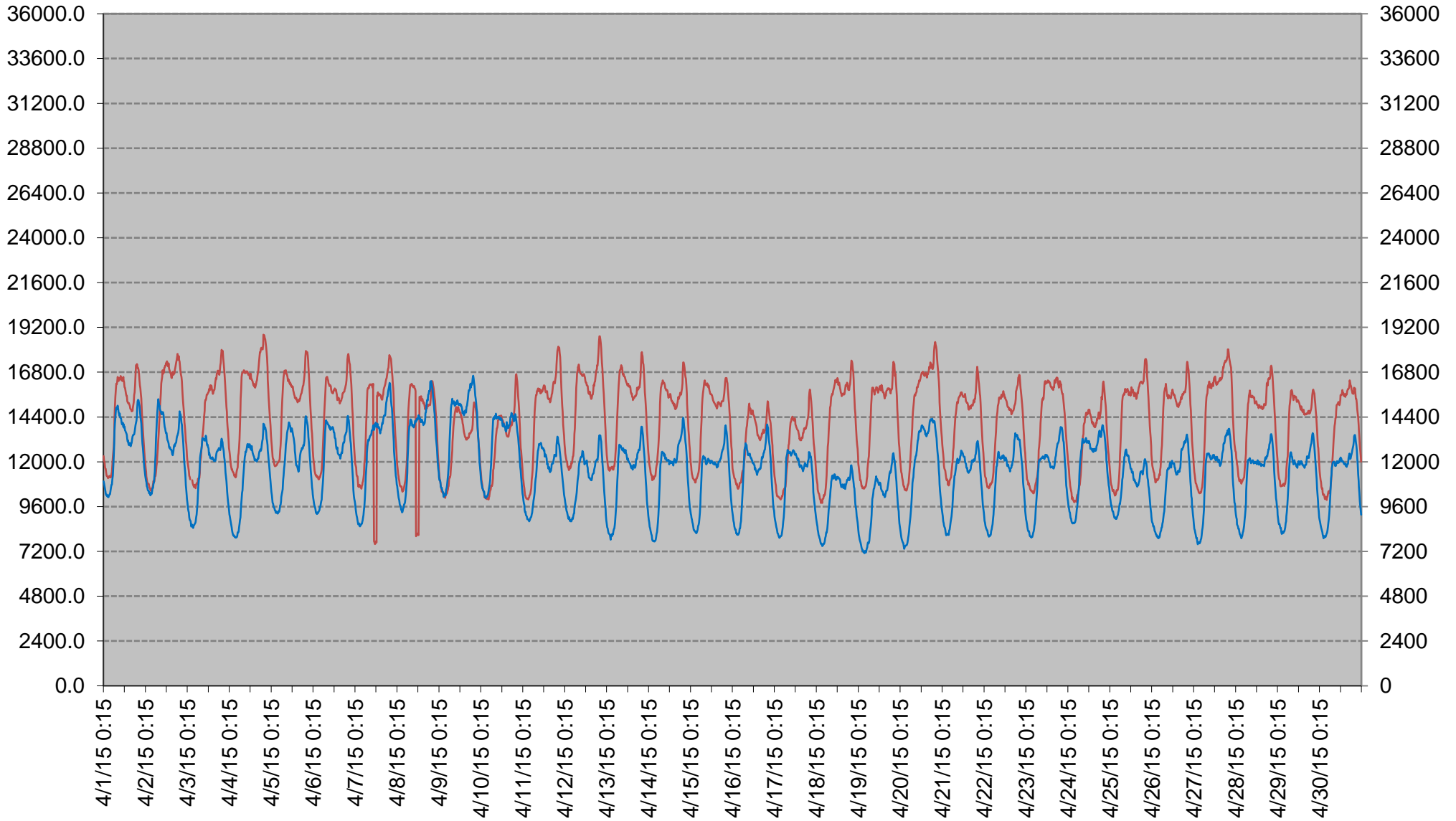
FEBRUARY



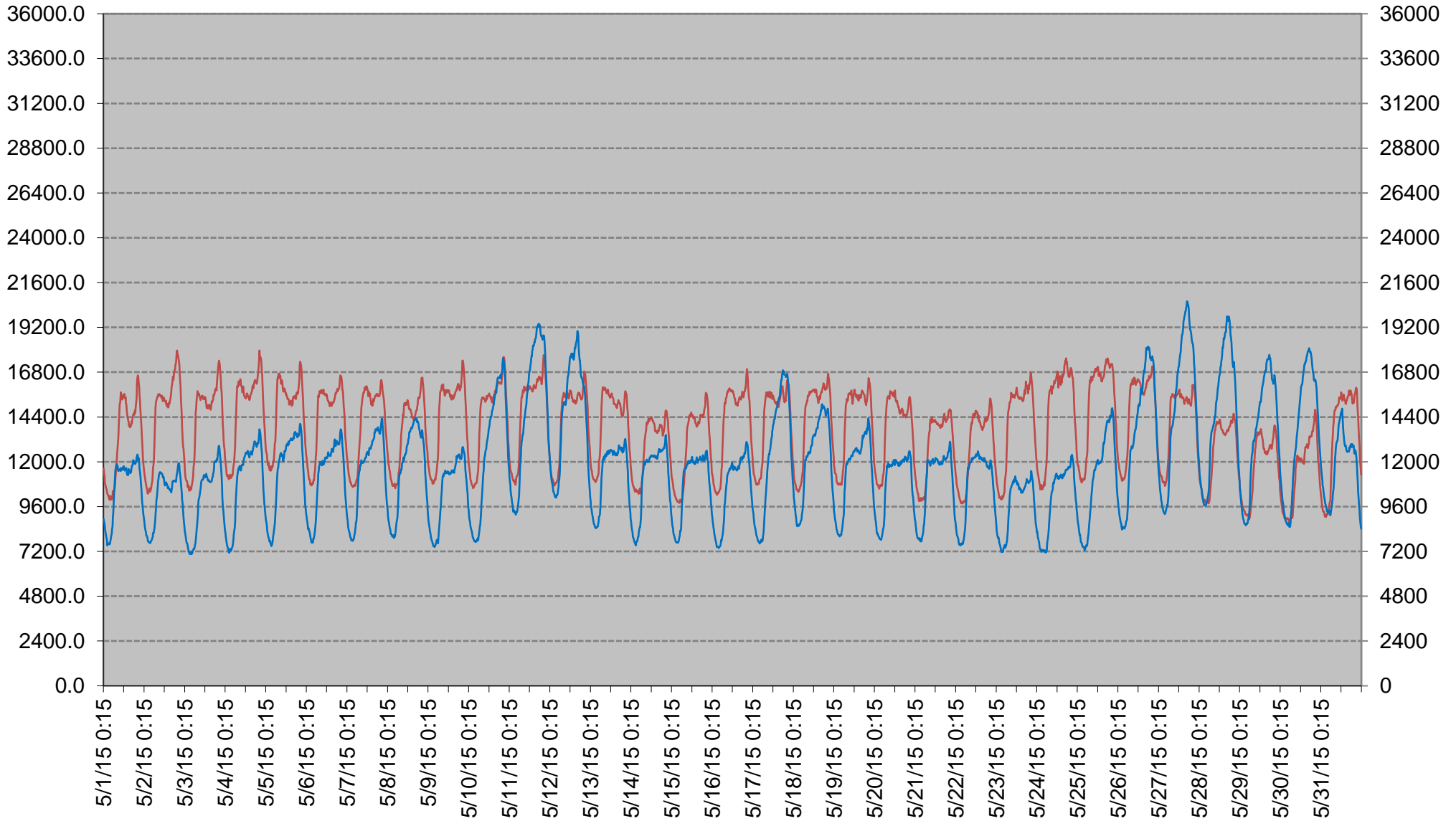
MARCH



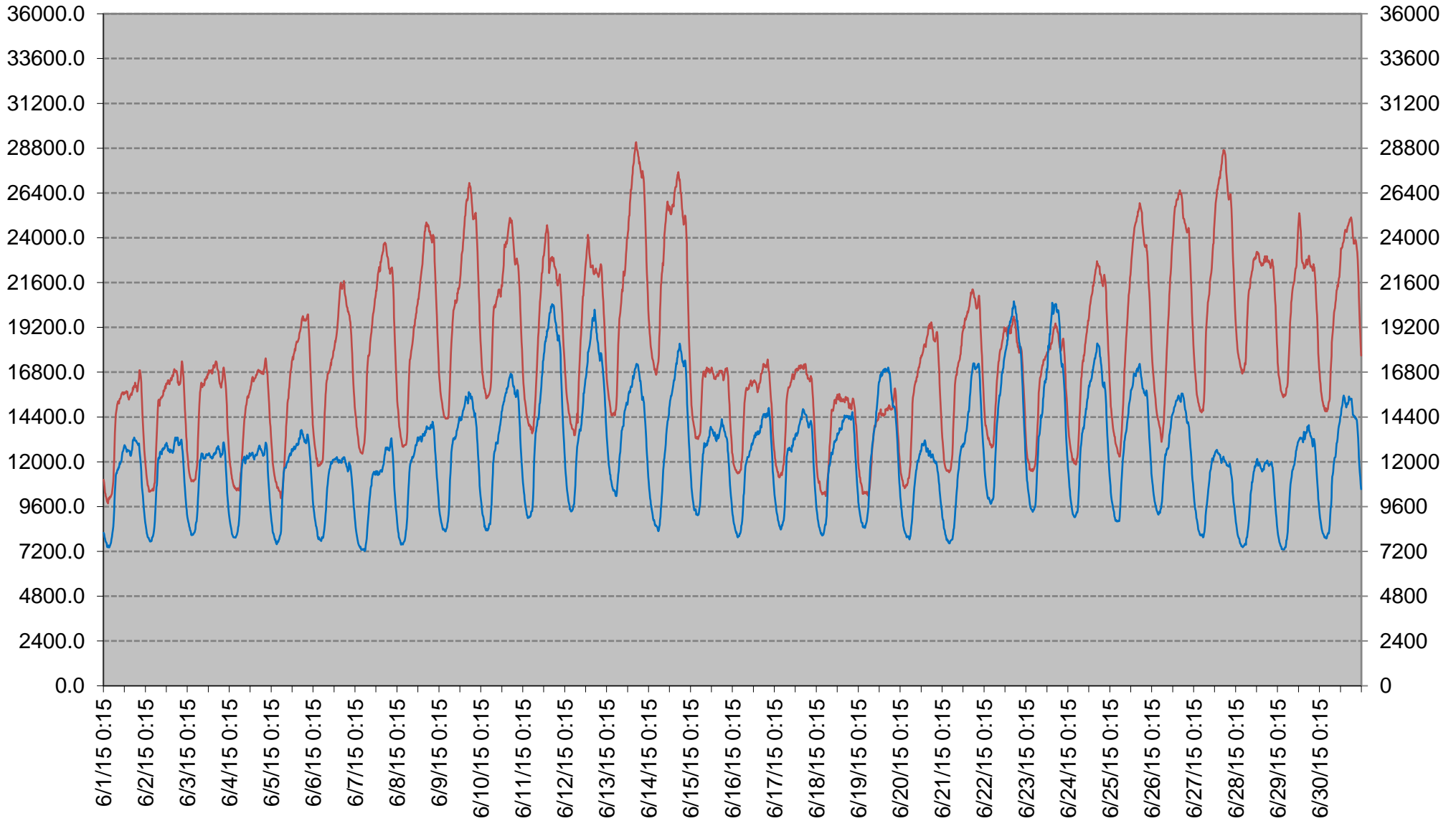
APRIL



MAY



JUNE



JULY

